

addendum 



HD1080
1920 x 1080

crystalioⁱⁱ

HDSDI 1
1080i Video
16:9 Screen
1080p @ 60HZ
16/9 Image
Zoom to 1080 Lines
HDMI Output
VXP Deinterlace

input output

film 2.2 passthru

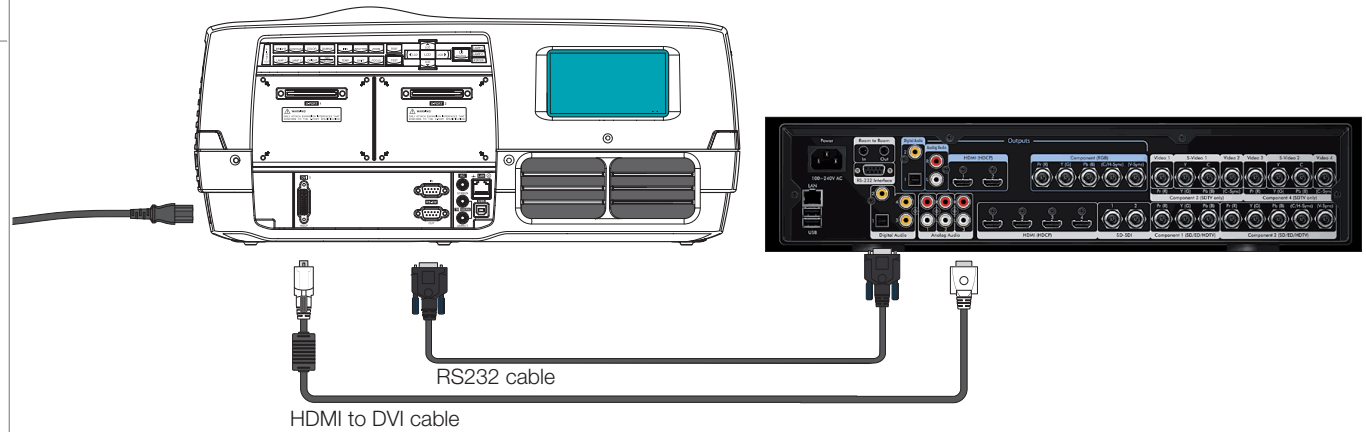
The Crystalio II projector control is a system for controlling the projector through the video processor. To control the projector, the RS232 or network connector must be connected. see illustration for details. Read the crystalio and the projector userguide for further information.

From the Crystalio II to the Action! model three 1080, only a single link of connection is needed for basic operation. This link is a HDMI-to-DVI cable that can be as long as up to 25m / 75ft. This cable will carry a 1920x1080 progressive signal, processed in the Crystalio II. In addition, for projector control, a similar length RS232 cable should be connected. This will give full access to all functions of the projector, through the same menu interface as that of the Crystalio II.

The Crystalio II will process and forward all incoming signals to the projector, processed and scaled up to it's native 1920 x 1080 resolution. This will be the same whether the input is standard TV or DVD signals at 480i or 576i (NTSC or PAL), or whether the input is High Definition, 1080i or 720p.

Main features of the Action! model three 1080 / Crystalio II combination include;

- Broadcast Quality video processing.
- Single Link between source connections and projector unit.
- Industry's best connectivity and compatibility.
- Single remote control and menu interface for all system control.



Crystalio II projector control**FEATURES****Power ON**

Turns the projector ON

Power OFF

Turns the projector OFF

Color Management

The color temperature can be calibrated as desired.
The Not Corrected setting displays the native color temperature of the projector.
The Temperature setting is adjustable in steps of 100 Kelvin from 3200 - 9200K

Color Temperature

See Color Temperature submenu for details

Lamp Selection

Select dual or single lamp mode. Dual Lamp mode, both lamps are powered
Single Lamp 1, only lamp 1 is powered.
Single Lamp 2, only Lamp 2 is powered

Lamp Eco Mode

When Lamp Eco Mode is set to ON, the lamps are running at reduced power to increase lamp life.

Lamp Power

See Lamp Power submenu for details.

Shutter ON/OFF

See Shutter submenu for details

Iris

Select Iris, then arrow keys to adjust to desired combination of brightness and contrast.

Focus

Select Focus, then arrow keys to focus the image

Shift

Select Shift, then the arrow keys to shift the image up, down or sideways.
The maximum lens shift are 110% vertically and 90% horizontally.

Zoom

Select Zoom, and then use arrow keys to zoom in or out in the picture.

Gamma

See Gamma submenu for details.

Orientation

See Orientation submenu for details

System Information

Displays information about the network connection and projector status.



Projector control submenus

Color Temperature

use arrow keys on the remote or the crystalio to adjust the color temperature in steps of 100 Kelvin from 3200 - 9200K along the black body curve of the CIE color chart

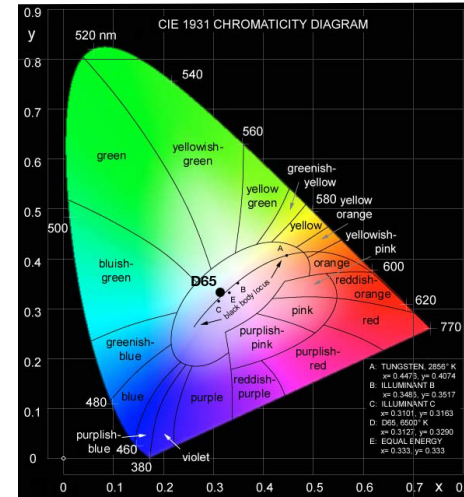
Lamp Power

Use the arrow keys UP/Down to select lamp 1 or lamp 2.
Use the RIGHT/LEFT keys to adjust the lamp power. The lamps are adjustable from 80 - 100% of maximum power.

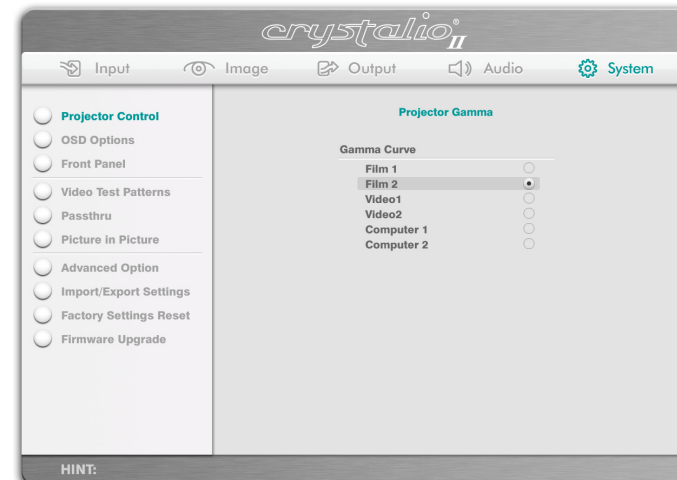
Gamma

The source image is adapted to characteristics typical to certain applications. This enables an optimized image depending on whatever the source is Film or video based, computer, etc.

Projector Color Temperature

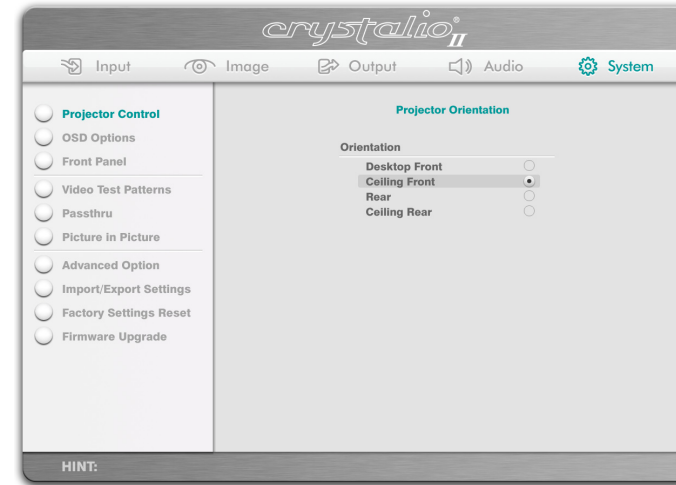


Projector Lamp Power



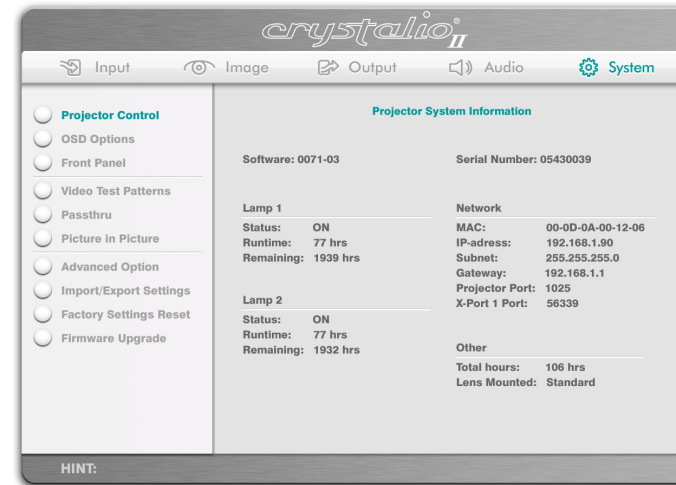
Orientation

Select between desktop front, desktop rear, ceiling front and ceiling rear mode. The image will be flipped and/or reversed accordingly.



System Information

Displays information about the projector network connection and the status.



More Control

For more detailed control, the projector has two protocols built in for control that can be used either through the RS232 connector or through the LAN connector. A simple instruction set (SIS) ASCII protocol gives access to the most frequently used commands. In addition, a binary protocol is available where each command is a series of 32 bytes in one packet. The protocols allow for both SET and GET operations. A detailed description of configuration, use and command set is described in a separate document "RS232 and LAN communication protocol and command set"

